



Quintic Automatic

Putting Report

Tutorial

www.quintic.com

Introduction

The Quintic Automatic Putting Report is designed to work as an add on to our premier Quintic Biomechanics analysis software. Auto track your golf putts using the provided digitisation template, export the Excel data file, and load it through the Quintic Putting Report program. This will then produce a PDF report, containing variables such as:

- Head Kinematics
- Pendulum Motion of the Stroke
- Shoulder & Upper Trunk Kinematics
- Trunk Kinematics
- Elbow Kinematics
- Wrist Kinematics
- Club Kinematics

This tutorial will lead you through the simple process in order to create the reports.

To access tutorials on Quintic Biomechanics v26 that are referred to throughout this tutorial please download them from http://www.quintic.com/tutorials_v26.htm.

Installing the Quintic Automatic Putting Report

Please follow the below instructions carefully in order to successfully install the Quintic Automatic Putting Report.

1. Download the Quintic License Key Generator, and run the 'setup.exe' application (NOT 'QuinticKeyGeneratorSetup').
2. In this application window, press on the 'Get System Code' button.
3. Copy the System Code generated into an email, along with the following information
 - a. Company Name
 - b. Contact Name
 - c. Contact Email Address
 - d. Report name (putting)
 - e. Address
 - f. Phone Number
 - g. System Code (generated in the above step)
4. Please email to info@quintic.com.
5. After receipt of your email, Quintic will send you a unique Licence Key.

Next, download the Quintic Automatic Putting Report program and run the 'setup.exe' installer and complete the installation as prompted by the instructions.

You can now open the Quintic Automatic Putting Report program via the Desktop Icon and login in using your own User Name and Password.

Follow the instructions, and when prompted, enter the Licence Key issued to you by Quintic.

WARNING: If re-installing the software onto a PC please make sure you create a copy of your report database BEFORE uninstalling the software from the PC. If you do not do this you will lose any existing athlete details from the database!

Creating a Copy of the Report Database

1. First, Go to the following folder location: C: Quintic Consultancy Ltd : Quintic Putting Report : DB.
2. Make a copy of the file named 'QuinticPuttingSystem.mdb' and save it onto the desktop.
3. Uninstall the report software via the add/remove programs function found within the control panel.
4. Install the new version of the report software onto the PC and complete the licence registration process as above.
5. Now copy the file named 'QuinticPuttingSystem.mdb' from the desktop to the following folder location: C: Quintic Consultancy Ltd : Quintic Putting Report : DB.

Microsoft Excel Drivers

A full version of Microsoft Excel is required for the Quintic Automatic Reports to read the required Excel Data Files. If any errors occur during the progress of uploading an Excel File, the following Excel driver may be required.

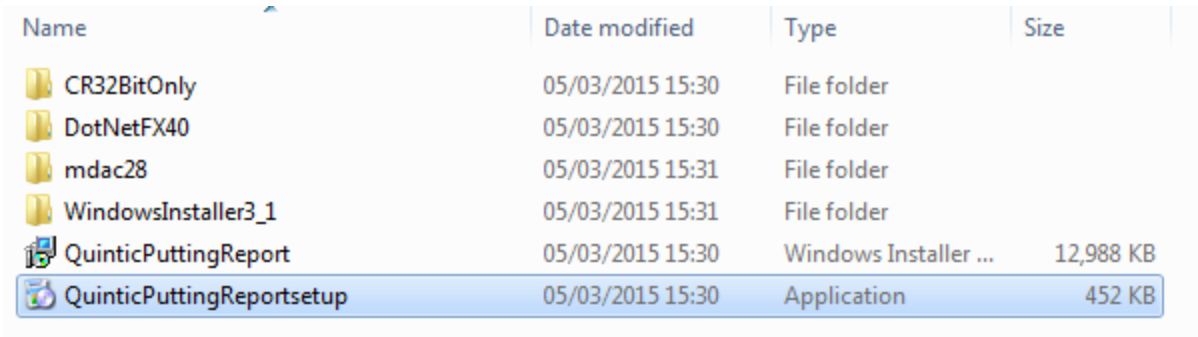
Please check if your PC is a 32bit or 64 bit version and download the appropriate driver from <http://www.quintic.com/downloads/QuinticPuttingReport.htm>

If errors continue please contact info@quintic.com.

Loading the Report Software

Download the Quintic Automatic Gait Report program and open the zip file.

Select 'QuinticPuttingReportSetup' as shown in the image below.

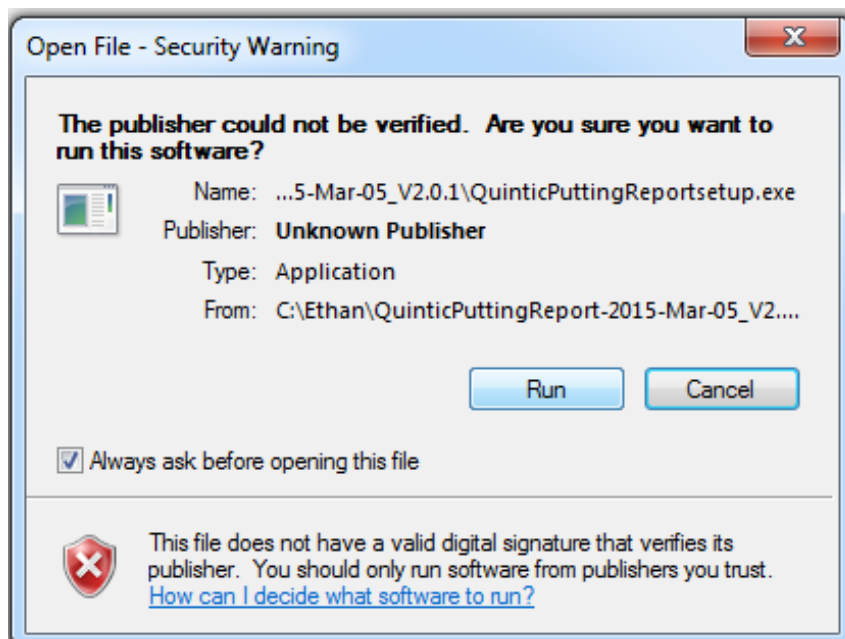


Name	Date modified	Type	Size
CR32BitOnly	05/03/2015 15:30	File folder	
DotNetFX40	05/03/2015 15:30	File folder	
mdac28	05/03/2015 15:31	File folder	
WindowsInstaller3_1	05/03/2015 15:31	File folder	
QuinticPuttingReport	05/03/2015 15:30	Windows Installer ...	12,988 KB
QuinticPuttingReportsetup	05/03/2015 15:30	Application	452 KB

Follow the instructions, and when prompted, enter the Licence Key issued to you by Quintic.

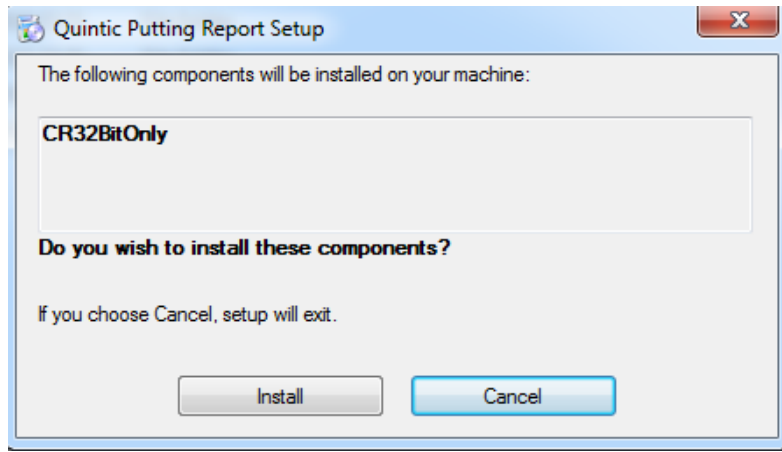
Step One

Once you have selected 'QuinticPuttingReportSetup' the window shown in the image below will appear



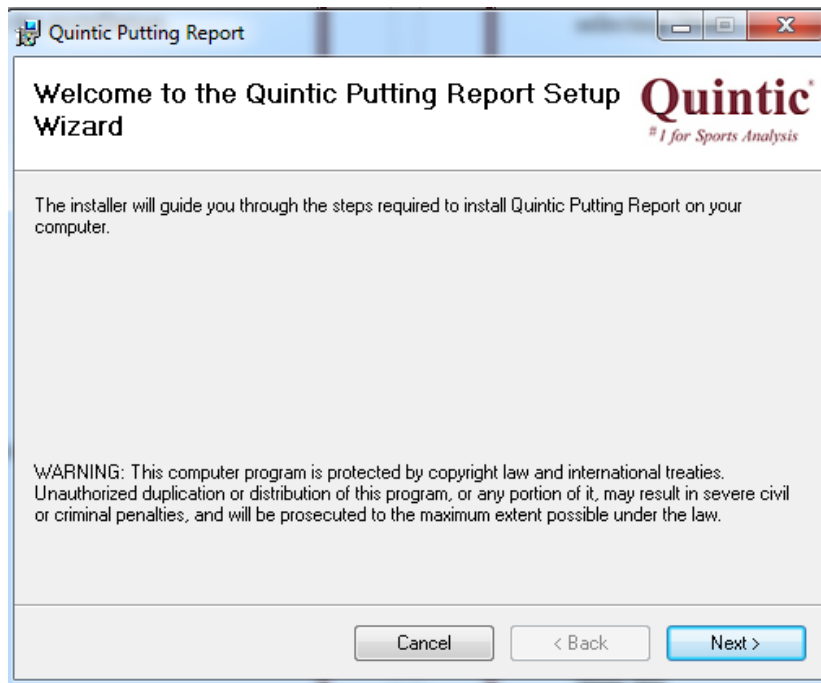
Step Two

Select 'install' and allow the computer to install the crystal report software.



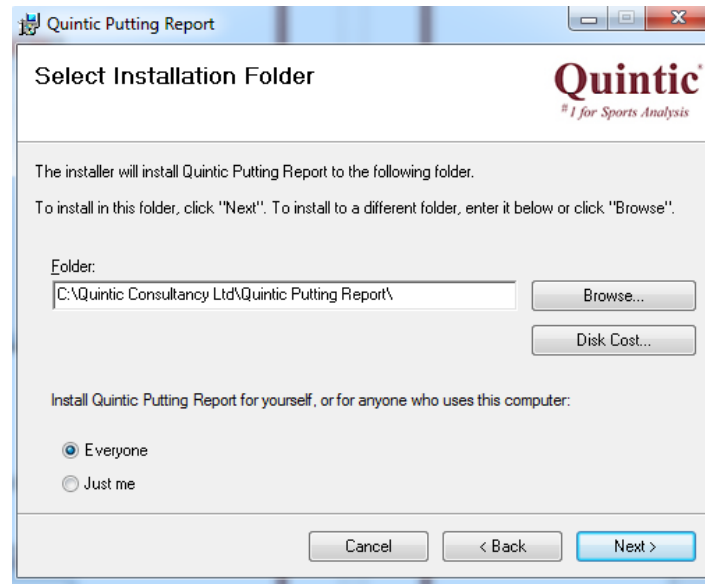
Step Three

Select 'Run' and the next screen will appear. Select 'Next' to move on in the installation process.



Step Four

Select 'Everyone' on the section asking who uses the computer, before you select 'Next' and move to the next installation window.



Step Five

The next window will ask you to confirm the installation which you will agree too by selecting 'Next'



Step Six

Once you have confirmed installation the programme will load automatically then the following screen will appear.

License Details

Quintic
#1 for Sports Analysis

Choose a User Name and Password (these will be required for future login). Next enter the Product Key provided by Quintic.

* User Name:

* Password:

* Confirm Password:

* Product Key :

Cancel Next

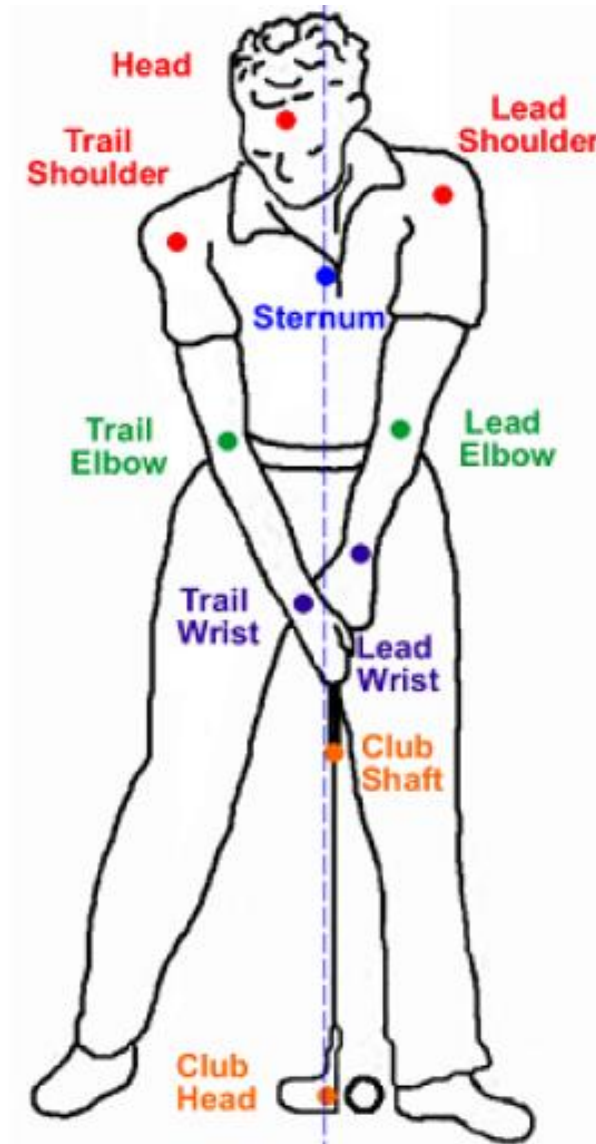
Once this screen has appeared you need to select your own username and password (select something you will remember easily). You must also enter your product key that was sent to you from 'info@quintic.com' after you sent the first code for the key generator.

Preparing & Collecting the Video Files

Set up a front facing camera so as the whole of the golfer is in view.

The player needs to be marked up with the following 10 markers as in the image below:

- Head
- Sternum
- Trail Shoulder
- Lead Shoulder
- Trail Elbow
- Lead Elbow
- Trail Wrist
- Lead Wrist
- Club Shaft
- Club Head



N.B. The above image is for a right handed Golfer, with them putting towards a target on the right hand side of this page. For a left handed player, the Lead and Trail markers are reversed for the Shoulders, Elbows and Wrists (although this doesn't affect the location of the ten markers at this stage).

Calibration

In order to facilitate the calibration process, we would advise that you create a calibration video file before collecting any putts. For this, hold the club shaft vertical, and still, and record for only a couple of seconds. From this, make a note of the length of the club you are using, as this will be used later on as your calibration distance in the vertical direction. You must only calibrate the video in the VERTICAL direction.

You are now ready to start collecting putts. In order for the program to determine where the 'start' of the putt is, we advise you either start recording just prior to the start of the stroke. Or after the video has been recorded you trim the file so there are only a few frames before address to the end of the stroke. The purpose of this is to ensure the program does not mistake practise strokes / any putter movement pre-address to be the start of the stroke.

Digitising the Video Files

Once you have collected the desired number of putts, they are now ready to be digitised. If reflective markers are used, the automatic digitisation feature of Quintic Biomechanics software can be utilised.

N.B. Please refer to Quintic Biomechanics v26 Tutorials 8a/8b for information on how to digitise.

During this digitisation process, the calibration needed is that of a purely VERTICAL calibration. If a calibration video has been created, this calibration file can be loaded across the putting videos. If the cameras are fixed (e.g. in a lab set-up) then this calibration file can be kept and reloaded for any putts completed.

It is important to note that the accuracy of this calibration procedure will affect the results produced.

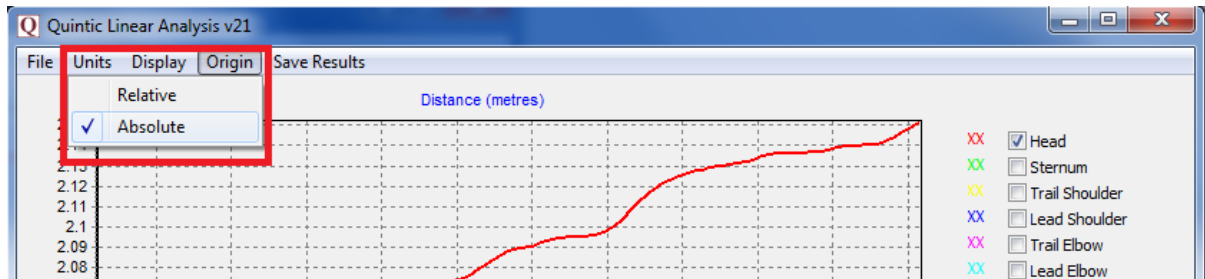
Once calibrated, use the digitisation template provided '10 Point Putting Template' (taking into account whether the player is right or left handed).

This template can be downloaded from...

<http://www.quintic.com/downloads/QuinticPuttingReport.htm>

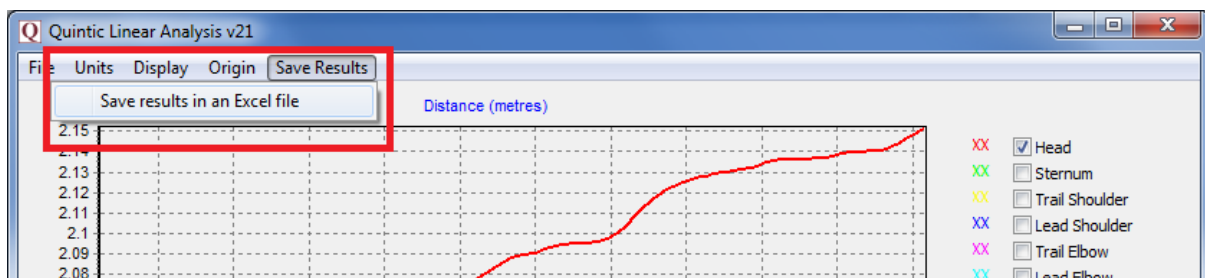
Creating the Excel Files

Once digitised, open the Linear Analysis Window (for help on this, please refer to the Quintic Biomechanics v26 Tutorial 9).



Click on 'Origin', and click on 'ABSOLUTE' (see above screenshot). This is very important in order to produce a correct report.

Next, in order to produce the Excel file, click on 'Save Results' then 'Save results in an Excel file' (as shown below), making note of the folder location of this saved file.

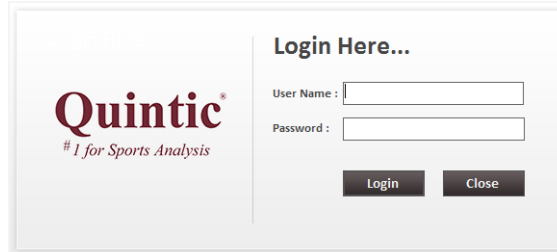


Repeat the steps above for all desired putts.

Using the Quintic Automatic Putting Report

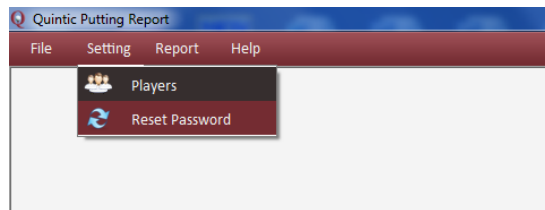
Adding Players

Open the Quintic Automatic Putting Report program from the desktop icon created during the installation. Please ensure the licence code sent to you by Quintic has been installed correctly, and your login details are correct.

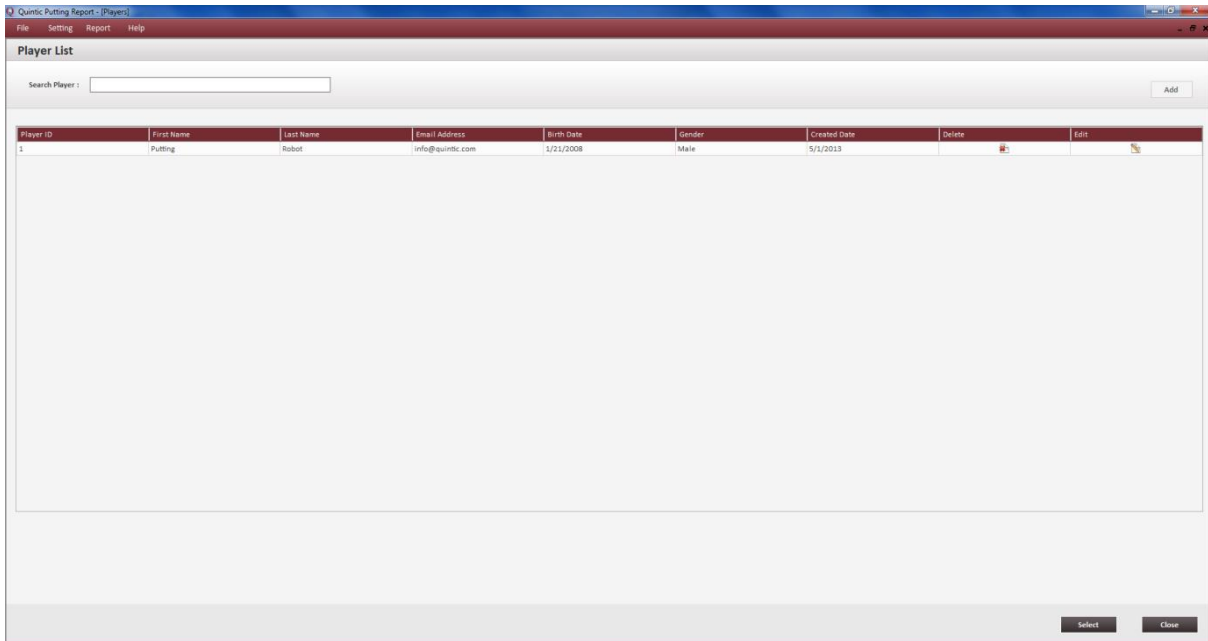


The image shows a login dialog box for the Quintic Automatic Putting Report program. On the left is the Quintic logo with the tagline "#1 for Sports Analysis". On the right, under the heading "Login Here...", there are two input fields: "User Name:" and "Password:". Below these fields are two buttons: "Login" and "Close".



The first thing to do is to add a player into the database. On the top toolbar, click on 'Setting' and then 'Players'.



The following window will appear, listing any players previously added into the database.



The image shows the "Player List" window in the Quintic Putting Report application. It features a search bar at the top with the text "Search Player:" and an "Add" button. Below the search bar is a table with the following columns: Player ID, First Name, Last Name, Email Address, Birth Date, Gender, Created Date, Delete, and Edit. The table contains one row of data.

Player ID	First Name	Last Name	Email Address	Birth Date	Gender	Created Date	Delete	Edit
1	Putting	Robot	info@quintic.com	1/21/2008	Male	5/1/2013		

At the bottom right of the window are "Select" and "Close" buttons.

To add a new player, click on the 'Add' button. This will bring up the following form where you can enter all the player details. The fields marked with * indicate a required field.

Player Details [X]

* First Name :

* Last Name :

* Date of Birth : 01/04/2008

* Gender : Male Female

* UOM : English

* Weight : 0 lbs

* Height : 0 0 feet & inch

* Email Address :

Contact No. :

Instructor :

* Hand Type : Left Handed Right Handed

Handicap :

Comment :

Save

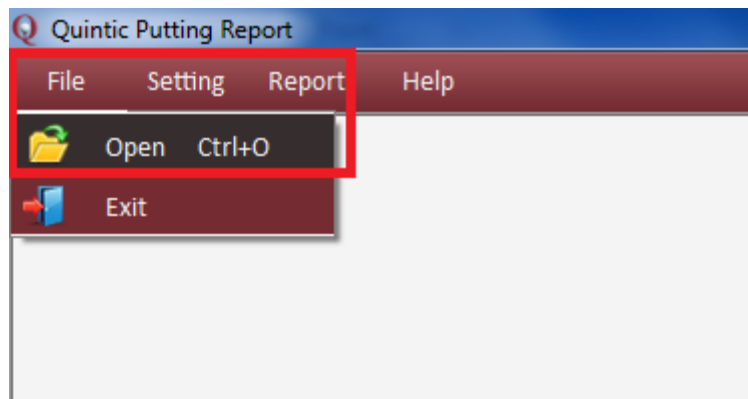
Once saved, the player will be added to the player list. From here they can be selected and a report can now be created for them.

Here you can also:

- Select a previously added player by clicking on their row in the table, then on 'Select'.
- Search the player list for a previously added player by typing in the top box.
- Order the player list by any of the variables in the top red row.
- Edit / delete any current player from the list.
- Add a new player.

Loading Putts

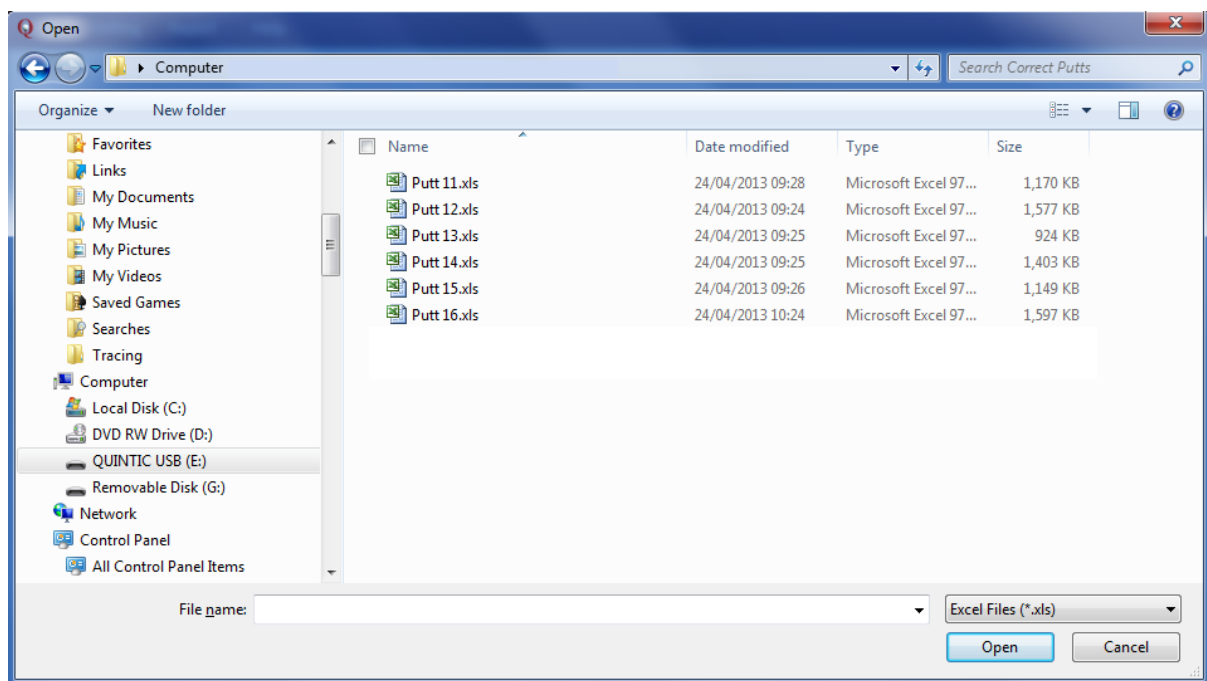
Putts can now be loaded for analysis. Click on 'File' then 'Open'.



This will then open a window from which you can select the desired Excel files that you wish to analyse.

The program is able to produce either a Single Putt or a Multiple Putt report. The Single Putt Report will display analysis just based upon one video and one Excel file, whereas a Multiple Putt Report will create a report based on up to 6 videos, displaying averages and standard deviations.

N.B. If you wish to create a Multiple Putt Report, in order for the results to be sensible, these putts need to be similar (i.e. we do not advise comparing a 4ft Putt with 16ft Putt within the same report).

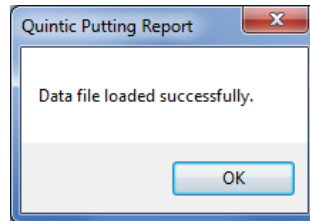


Select the putts you wish to analyse and click on 'Open'. Here it is possible to highlight and select multiple Excel files to load at once. If you select an incorrect file and wish to change this, simply right click on the file to delete and reselect the correct file.

Once you have selected all the required files, click 'Save'. The adjacent animation will appear, notifying you that the program is processing the Excel file(s). This may take a while if multiple putts are being loaded at once.

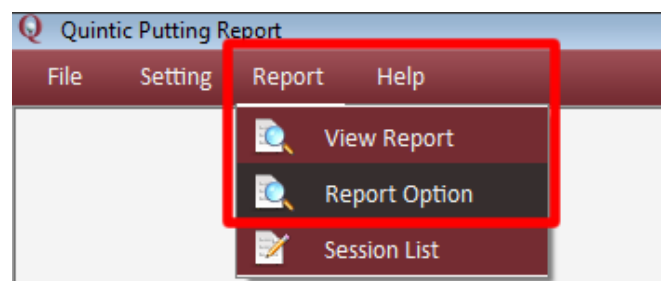


Once successful, the following information box will appear.

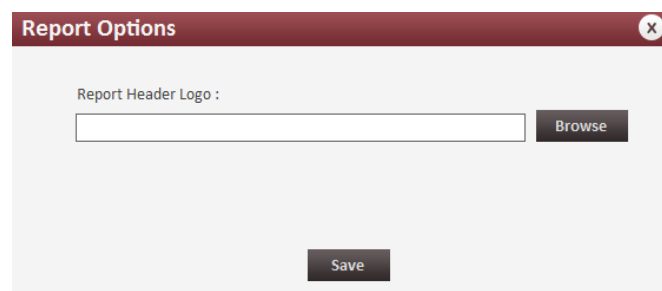


Add a Logo

Before creating the report, there is a customization option to add your own logo onto the front page. This option is only available before you create the report. If left blank/not changed, there will be no logo at the top left hand corner of the front page. However, if you wish to add a logo, click 'Report', 'Report Option'.



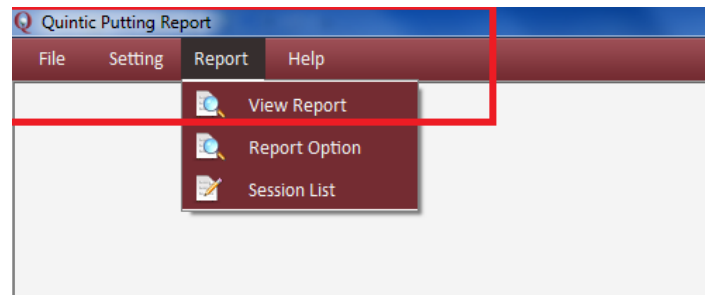
This will open the following window, where you can browse for the desired image and then 'Save' the changes.



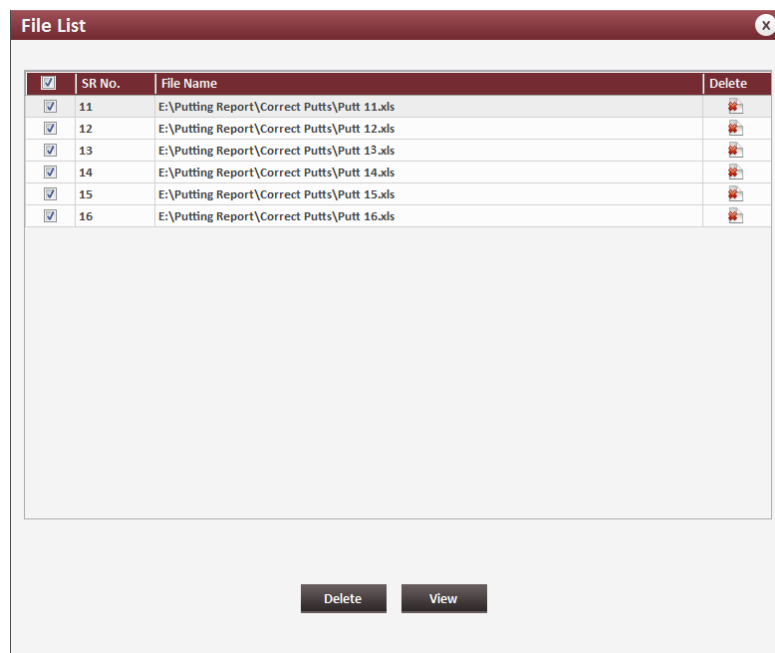
N.B. This Logo will remain on all future reports unless you change or remove it.

Create the Report

The next step is to create a report. Click on 'Report', 'View Report' (as displayed below).



The following list will appear, displaying the putts which you have loaded.



From here, you can select whichever putts you wish (be that one or six). If you select more than one putt, the report will create averages and standard deviations for the outcome characteristics to help you compare the strokes. These Excel files will remain in the File List until you next close down the program.

N.B. You can have more than six files loaded at this stage, however, the report will only compile up to six at once. It is the user's choice, which putts are to be included in the report.

Select the files you wish to be included in the report using the tick boxes, the click 'View'.

The report is now created.

The toolbar below appears above the report, and has the following functions:

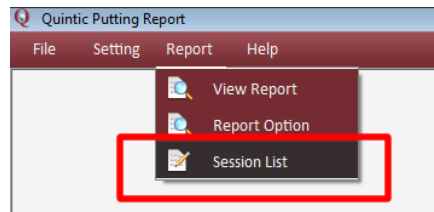


1. **Export Report** –Allows you to export the report as a PDF, Excel or Word Document.
2. **Print Report** – Prints the report straight from the program.
3. **Page Control** – These buttons allow you to navigate through the pages of the report.
4. **Find Text** – Allows you to search the document for a specific piece of text.
5. **Zoom Function** – Change the zoom of the report within the window.
6. **Add Report Summary** – Enables you to add comments / text into the ‘Summary’ box on the front page of the report.
7. **Save Session** – This allows you to save the created PDF into the program memory to load again at a later date.

Additional Program Features:

Session List

To view the Session List, click 'Report', 'Session List'



Here, by clicking on the blue File Name, you can load previously created reports into the program.

Change Login Details

Click 'Setting', 'Reset Password'. Here this will allow you to change your login details (Username and Password).

